

CERTIFICATE OF ANALYSIS

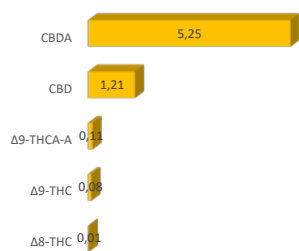
Customer Name: WPA Mont, s.r.o.
Address: Karpatské Námestie 10/A, 83106 Bratislava

Phone Number: +421 910 116 685
Email: info@cbdfarma.sk

Sample Type: flower
Sample Description: BUBBA
Sample TAG ID: 100701
Analysis Type: Cannabinoids

Date Received: 15/Apr/24
Test Date: 16/Apr/24
Test Method: HPLC-01
Sample Weight (mg): 101

CANNABINOID PROFILE



8,42%
Total
Cannabinoids *

Compound		Result (% w/w)	mg/gram of sample
THCV	Tetrahydrocannabivarin	0,05	0,51
Δ9-THCVA	Tetrahydrocannabivarinic Acid	0,08	0,81
Δ8-THC	(-)-Δ8-Tetrahydrocannabinol	0,01	0,10
Δ9-THC	(-)-Δ9-Tetrahydrocannabinol	0,08	0,81
Δ9-THCA-A	(-)-trans-Δ9-THC acid A	0,11	1,11
CBD	Cannabidiol	1,21	12,12
CBDA	Cannabidiolic acid	5,25	52,52
CBDV	Cannabidivarin	0,01	0,10
CBG	Cannabigerol	0,01	0,10
CBGA	Cannabigerolic acid	1,41	14,14
CBN	Cannabinol	0,08	0,81
CBC	(±) Cannabichromene	0,01	0,10
CBL	(±)Cannabicyclol	0,10	1,01
9S-HHC	9(S)-Hexahydrocannabinol	0,00	0,00
9R-HHC	9(R)-Hexahydrocannabinol	0,00	0,00
H4CBD	Tetrahydrocannabidiol	0,00	0,00
THC-P	Tetrahydrocannabiphorol	0,00	0,00
HHC-P	HEXAHYDRO CANNABIPHOROL	0,00	0,00
HHC-O	Hexahydrocannabinol ACETATE	0,00	0,00
Total Cannabinoids *		8,42	84,23
Total Potential THC		0,19	1,88
Total Potential CBD		5,82	58,18
Total Potential CBG		1,25	12,52
Total Potential HHC		0,00	0,00
Total Potential H4CBD		0,00	0,00
Total Potential THC-P**		0,00	0,00
Total Potential HHC-P**		0,00	0,00
Total Potential HHC-O**		0,00	0,00

NOTES

* Total Cannabinoids = sum of all measured natural occurring cannabinoids
 Total Potential THC = Δ9-THC + Δ8-THC + Δ9-THCA-A*0.877
 Total Potential CBD = CBD + CBDA*0.877
 Total Potential CBG = CBG + CBGA*0.878
 Total Potential = Sum of all the ISOMERS

FINAL APPROVAL

Analyst Name:	GP	QA Name:	GP
Date:	16/Apr/24	Date:	16/Apr/24

Prepared By: BR Approved By: BR

Testing results are based solely upon the sample submitted to THE L(A)B DIREKT in the condition it was received. THE L(A)B DIREKT warrants that all analytical work is conducted professionally in accordance with all applicable standard laboratory practices using validated methods.

This report may not be reproduced, except in full, without the written approval of THE L(A)B DIREKT